



SOFFITTI

MARIANO FARRUGIA  
PELLI

P. I. La Herrada - C/ Príncipe de Asturias, 41 - Apdo. 452  
30510 Yecla (Murcia) Spain

info@soffittipelli.com

Tel: +34 968 751 039 | Fax: +34 968 792 672

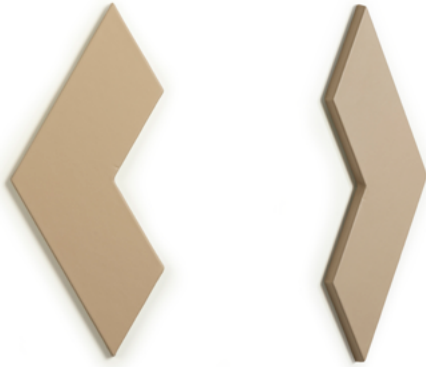


[www.soffittipelli.com](http://www.soffittipelli.com)

## FICHA TÉCNICA / DATA SHEET SERIE LINED REF. PLIM

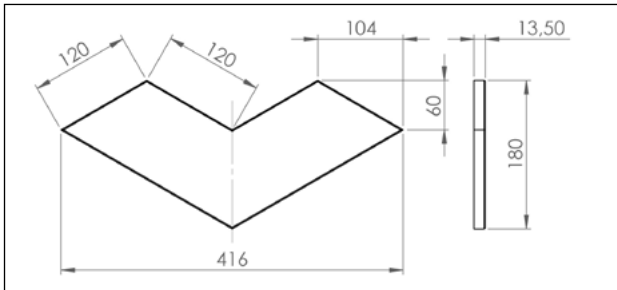
### MATERIALES DE LA PIEZA / MATERIALS:

Interior: Construido en fibra DM / Inner: manufactured in MDF  
Exterior: Piel Mariano Farrugia (opcional en tejido o polipiel) /  
Outer: Mariano Farrugia leather (textile or faux-leather optional)

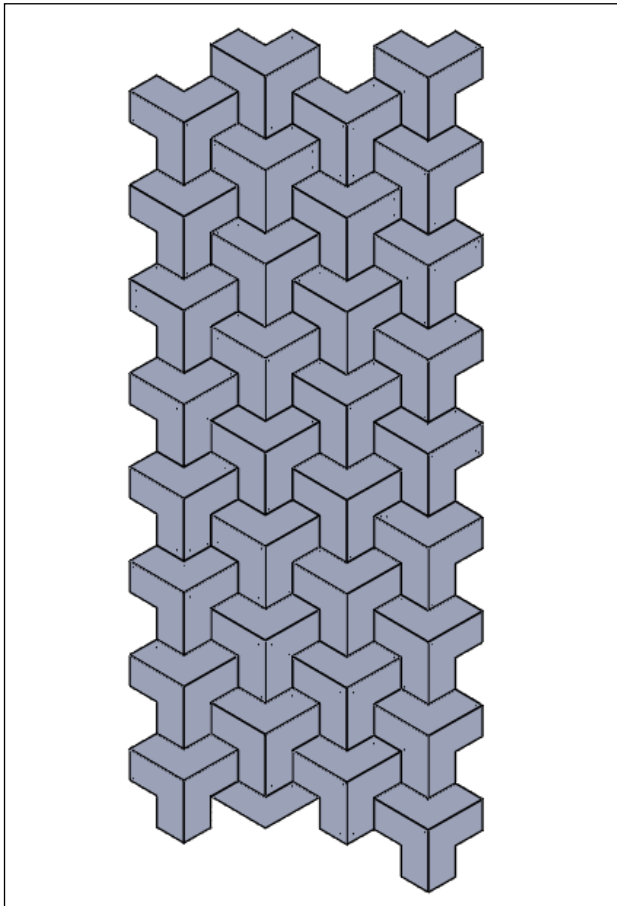


### DIMENSIONES / DIMENSIONS:

416 x 180 mm. - Grosor: 13,50 mm. /  
416 x 180 mm. - Thickness 13,50 mm.



### EJEMPLO DE COMPOSICIÓN CON LA SERIE LINED / COMPOSITION EXAMPLE USING LINED SERIE





SOFFITTI

MARIANO FARRUGIA  
PELLI

P. I. La Herrada - C/ Príncipe de Asturias, 41 - Apdo. 452  
30510 Yecla (Murcia) Spain

info@soffittipelli.com

Tel: +34 968 751 039 | Fax: +34 968 792 672

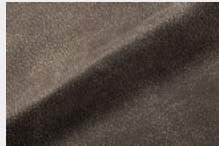


[www.soffittipelli.com](http://www.soffittipelli.com)

**COLECCIONES DE PIELES DISPONIBLES / LEATHER COLLECTIONS AVAILABLE:**



AMERICAN VINTAGE



ANGELO



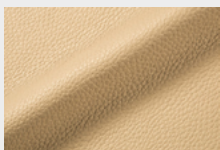
ANTIQU COLONIAL



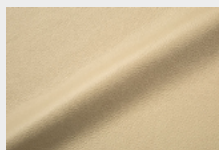
ASCOT



BABEL



CIERVO



DÁLMATA



GAUDÍ



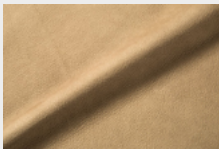
HORSY



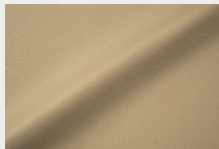
JOKER



LUXURY



NABUCK



SAVANA



TAURO



TEMPESTA



VERONA



VINCI

**NOTAS / NOTE:**

· Para utilización de otros materiales como tejidos o polipieles, consultar / *If any other materials such as textile, or faux-leather are desired, please contact us.*

· Este modelo puede realizarse en medidas especiales, según las necesidades del proyecto del cliente / *This model can be tailored made according to client's projects requirements.*